


(Unit:mm)

SensLights Model Specification	SLL-1223B Infrared Motion Sensor
Power Supply	85-265V/AC
Load	Load (85V) Max. 800W incandescent bulb (resister-load) or 200W fluorescent load Load (265V) Max.2000W incandescent bulb (resister-load) or 800W fluorescent load
Power Consumption	0.45W(static 0.1W)
Sensing Angle	360 degrees / 120 degrees
Sensing Distance	15 meters Max(wall installation) 13m Max.(ceiling installation)(24°C~26°C)
Time setting:	Time setting: (Delay time can be set by the key or remoter) 3min,6min,9min,12min,15min,18min,21min,24min,27min,30min
Illumination	<50LUX (it can be customized to your needs)
Working temperature	-10° C~40°C
Measurement	8.95*4.8*10.38 CM
Weight	173g
Wiring	2IN / 2OUT
Installation height	2-12m (ceiling installation) 2-3m (wall installation)
Humidity	<93% HR
Detection Motion Speed	0.6-1.5m/s
Illumination Location	Gate, backyard, garage, stairs, balcony, fence gate
Notes	1.Avoid sunshine or being against draft outlet of air-con and vent for the installation location. 2.Avoid humidity. 



SLL-1223B infrared motion sensor.

SensLights

This product is a brand new digital energy-saving lighting switch, it adopts high sensitivity detector, MCU control, SMT; It gathers automatic, convenient, safety, energy saving, anti-disturbance and practical functions; The wide detection range is made up of the up and down, left and right detection field; It utilizes the infrared energy from Human Body as the control-signal source, When one enters the detection field, it will start the controlled load; It can identify day and night automatically; Its installation is convenient and its detection range is wide; It has the functions of the power indication and the detection indication.



SPECIFICATIONS:

Power source: 85-265V/AC

Power frequency: 50/60Hz

Time setting: (Delay time can be set by the key or remote)

3min, 6min, 9min, 12min, 15min, 18min, 21min, 24min, 27min, 30min

Rated load: (85V) Max. 800W incandescent bulb (resistor-load) or 200W fluorescent load (265V) Max. 2000W incandescent bulb (resistor-load) or 800W fluorescent load

Detection range: 15m Max (wall installation)

13m Max. (ceiling installation) (24°C~26°C)

Detection angle: 360° / 120°

Working temperature: -10~40°C

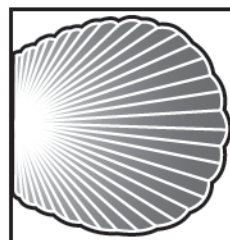
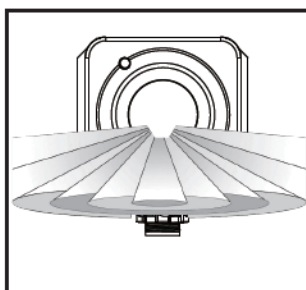
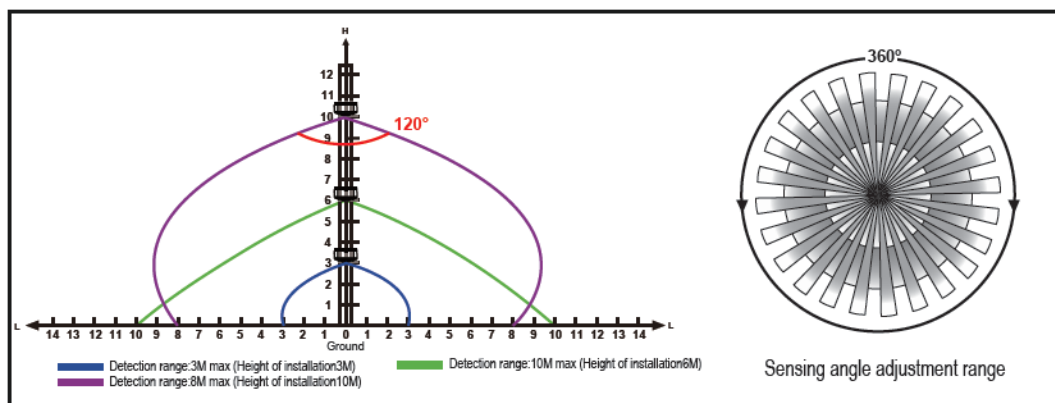
Working humidity: <93%RH

Installation height: 2-12m (ceiling installation), 2-3m (wall installation)

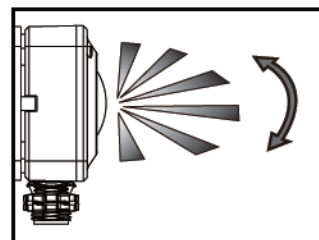
Detection motion speed: 0.6~1.5m/s

Light-control: <50LUX (it can be customized to your needs)

SENSOR INFORMATION:



Correct moving orientation

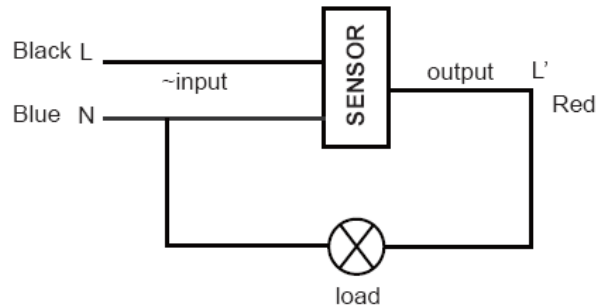


Detection angle

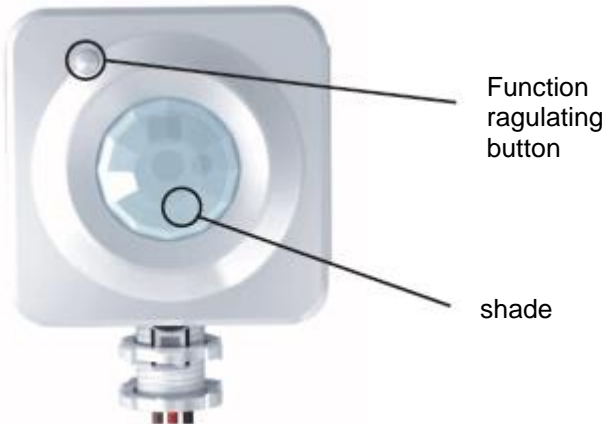


CONNECTION-WIRE DIAGRAM:

Connect the power and the load wire with the sensor according the right figure.



FUNCTION:



Time setting:

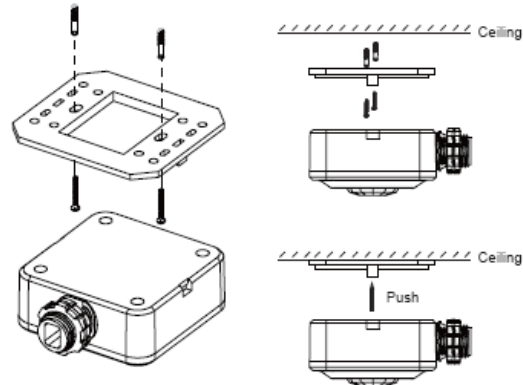
Press the button till the LED indicator flickers once and then enter setting mode (Before setting, the indicator stays active. When setting, the indicator stays inactive.) In time setting mode, it will add 3 mins each time you press the button and at most 30 mins, that is at the 11th time, it returns to 3 mins. The LED indicator flickers once you press the button and 4 secs after setting finished, LED indicator flickers 5 times and then the system saves the information.

Test mode:

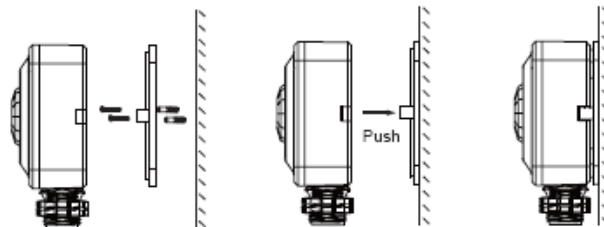
Press the button the LED flash one time, till the LED flash twice, then loosen the button. 4secs later, the LED flash for 5 times indicating the system is in test model. In this model, regardless of day or night, when it receives signal, the lamp will light on for 10secs. 10 mins later, it will quite this mode and into automatic reaction model.

INSTALLATION INSTRUCTION:

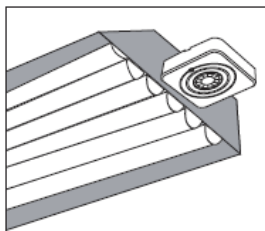
- (1) Before installing switch off power.
- (2) Take off the bottom-stand.
- (3) The bottom-stand is fixed on the selected position with inflated screw.
- (4) Connect the power and the load into the connection-wire column of the sensor according to connection-wire diagram.
- (5) The sensor aimed at the lock of the bottom-stand and push.



Wall Installtion
(Installation method
is similar to ceiling
installation)



FOR OCCASIONS:



The control switching devices, installed in the nonmetallic objects.
Can be widely used in home \ market \ office building \ factory \ hotel \ institution etc.
This product can be installed at the height up to 10M, suitable to be installed in the large warehouse.



Living room



Warehouse



Office



Meeting room

SOME PROBLEM AND SOLVED WAY:

1、 The load do not work:

- a: Please check if the connection-wiring of power and load is correct;
- b: Please check if the load is good ;
- c: Please check if the working light set correspond to light-control.

2、 The sensitivity is poor:

- a: Please check if there has hinder in front of the detection window to effect to receive the signal;
- b: Please check if the ambient temperature is too high;
- c: Please check if the induction signal source is in the detection fields;
- d: Please check if the installation height corresponds to the height showed in the instruction;
- e: Please check if the moving orientation is correct.

3、 The sensor can not shut off the load automatically:

- a: Please check if there is continual signal in the detection field;
- b: Please check if the time setting is the longest;
- c: Please check if the power correspond to the instruction;
- d: Please check if the temperature near the sensor change obviously, such as air condition or central heating etc.



Warning!

- Please confirm with professional installation.
- Please cut off power supply before installation and removal operations.
- Make sure that you have cut off the power for safety purposes.
- Improper operation caused losses, the manufacturer does not undertake any responsibility.

We are committed to promoting the product quality and reliability, however, all the electronic components have certain probabilities to become ineffective, which will cause some troubles. When designing, we have paid attention to redundant designs and adopted safety quota to avoid any troubles.

This instruction, without our permission, should not be copied for any other purposes.

