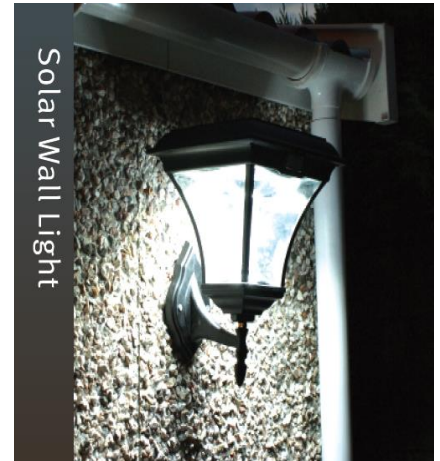


SLDY008W

No Wiring No electricity!



Product name: Solar Powered Garden wall Lamp

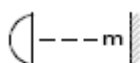
Housing Material	Aluminum Alloy
Product size:	28.00 X 28.00 X 42.50 CM
Body Color	Black
Solar Panel	4W high-efficiency monocrystalline PV module
Battery	Fully sealed deep cycle free maintenance type
Power Storage	3.6 V/4.5AH solar special lead-acid battery
Controller	Intelligent controller:light/time intelligent control, PWM mode; waterproof, IP66 guard level;various protections,over charge and over-discharge protect function
LED Source	29pcs high brightness LED
LED Type	φ 5 LEDs
Color Temperature	6000-8000K
LED colors	white/warm white etc
Average Life (hrs)	35000
Average operation time	10--12 hrs/day
Charging time	4 hours
Working time	10-12hours,battery capacity providing 2-3continuous cloudy or rainy days backup
Temperature Range	-40 -- +80 Degree
Protection	IP65

Fixed outdoor solar light

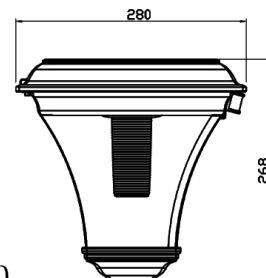
1. Warning symbols



Read the instructions



Minimum distance from lighted objects (meters)



2. General Safety Instruction:

Read this instruction manual thoroughly before using the appliance and save it for future reference and if necessary pass the instruction manual on to a third party.

WARNING: When using electrical appliance, basic safety precautions should always be followed to reduce the risk of fire, electrical shock and personal injury.

1) General

Please ensure that children or unauthorized persons don't have access to this product. Any visitor, especially children, shall be kept away from the work area.

WARNING: Switch the luminaire off prior to assembly, maintenance, exchanging the bulb, exchanging the battery or cleaning processes.

The minimum distance from other light sources should be 0.5 metres. Do not place it near to other light sources.

For best performance and safety reasons, replace the [Li-ion] or [Ni-MH] battery, every [year]. Only use rechargeable batteries of the right size and the recommended type.

For outdoor use only.

Check the intended location before the installation for sufficient exposure to sunlight. Do not install the luminaire in a location which is exposed to shade.

2) Electrical safety

Inspect the proposed drill hole location for any utility lines (e. g. water, gas, power) before drilling. Use a suitable device such as a metal or electricity line detecting device.

3. Specific Safety Rules

No specific Safety Rules apply.



4. Environmental protection

CAUTION!



Electrical products must not be thrown out with domestic waste. They must be taken to a communal collecting point for environmentally friendly disposal in accordance with local regulations. Contact your local authorities or stockist for advice on recycling. The packaging material is recyclable. Dispose of the packaging in an environmentally friendly manner and make it available for the recyclable material collection-service.



Batteries must be recycled or disposed of properly. Do not dispose of batteries in regular trash, municipal waste stream or by fire, as batteries may leak or explode. Do not open, short circuit or mutilate batteries as injury may occur.

Ni-Mh

5. Appliance specifications

TECHNICAL CHARACTERISTICS	
Rated voltage	6,4 V
Rechargeable battery	LiFePO4
Illuminant	LED
Burning time	3~8Hours

6. Installation / Assembly / Parts Identification / Drawings

Wall Mounted:

- 1) Find a suitable place, marking the holes by wall bracket base. Then drill holes on a wall.
- 2) Put the Anchors into the holes and fix it by twisting Nut.
- 3) Release the Nut from the Anchor and put the wall bracket through Anchor. Put the Pad and Spring Pad, then tight the Nut. Make sure the wall bracket is fixed stable enough.(as shown in Figure 1)
- 4) Fix the connector to wall bracket base by provided nuts, then twist the lamp head to connector (as shown in Figure 2 and 3)

Battery Replacement:

- 1) There is 2 screws at the PCB board, release it. Then release another 2 screws at the "battery" fixing metal bracket (as shown in Figure 4).
- 2) Take out the old battery and replace with new battery. Ensure the new battery is rechargeable LiFePO4 battery pack.
- 3) Reassemble the unit by reversing the above procedure



Figure 1



Figure 2

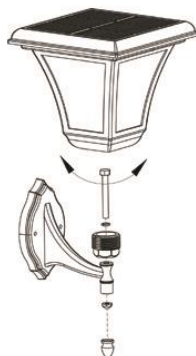


Figure 3



Figure 4

Attention: 1) The lamp must be left to charge for 2 sunny days on OFF position for first time use..

2) The performance of the solar lamp will vary with the time of year. It will deliver more light when it has had a full day in the sun rather than a day in overcast weather.

7. Operating instructions / Drawings

Push switch to choose the brightness (as shown in Figure 5). There is totally 2-level brightness for your choice.

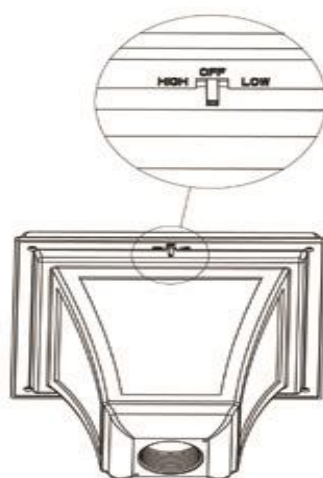
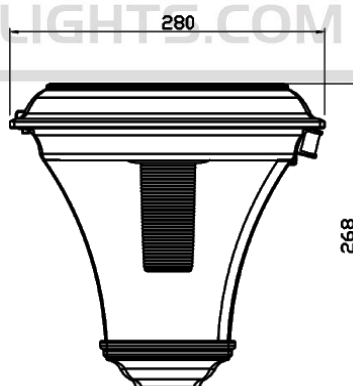


Figure 5





No Wiring No electricity!

1. Maintenance / Cleaning

Switch off the luminaire before maintenance and cleaning.

Repairs should only be carried out by qualified persons and using genuine spare parts. Inappropriate repairing could cause significant danger.

WARNING: The use of any accessory not specified in this manual may present a risk of personal injury.

Cleaning of solar panel in summer / winter

Changing rechargeable battery

Long-time storage (exposure to light, charge/discharge cycle)

If you need any support please contact: support@senslights.com

2. Others (Service, Repairing, Guarantee, etc ...)

-Have your product repaired by a qualified person

This electric product is in accordance with the relevant safety requirements. Repairs should only be carried out by qualified persons using original spare parts, otherwise this may result in considerable danger to the user.

- Please contact the SensLights store which you bought the product for after sale services if any. Or contact: support@senslights.com



No Wiring
No electricity

